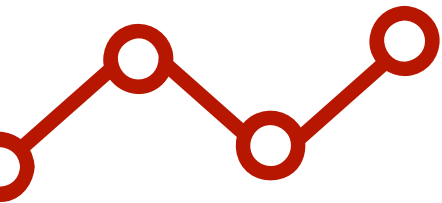
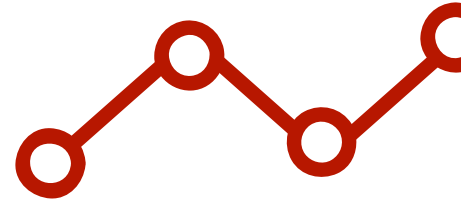
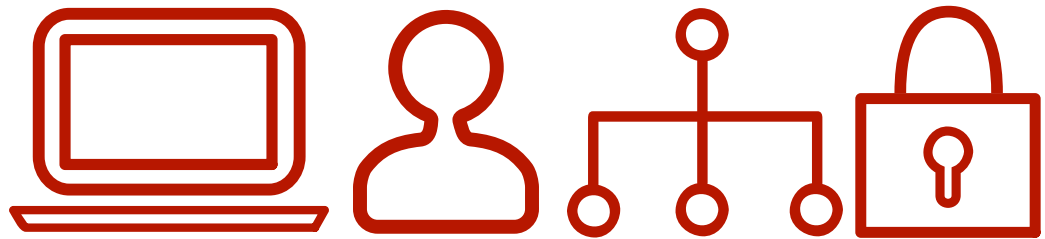


ISSDA

Irish Social Science Data Archive

*Jenny O'Neill, Data Manager,
UCD Library*

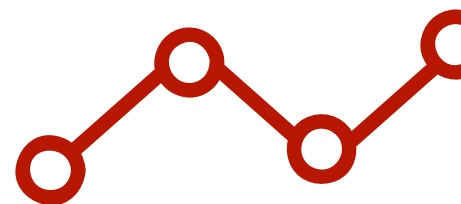




OVERVIEW

- Background
- Services for depositors
- Future services
- Depositor responsibilities
- Services to researchers

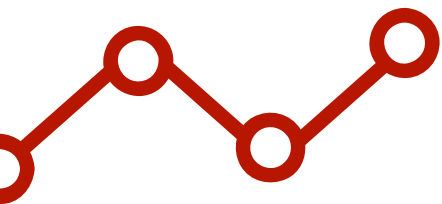
IRISH SOCIAL SCIENCE DATA ARCHIVE

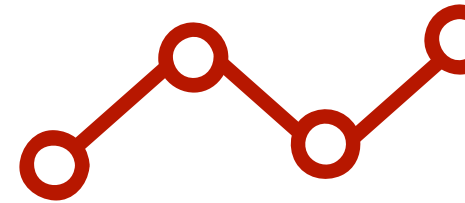


ISSDA is

Ireland's leading centre for quantitative data acquisition, preservation, and dissemination.

Based at UCD Library, its mission is to ensure wide access to quantitative datasets in the social sciences, and to advance the promotion of international comparative studies of the Irish economy and Irish society.





BACKGROUND

2000

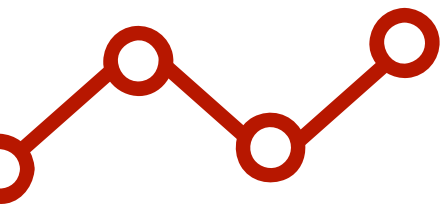
ISSDA was set up in 2000 in the Geary Institute in UCD with support from the CSO & ESRI.

2012

ISSDA transferred from the Geary Institute to UCD Library during the summer of 2012.

2016

A Data Manager for ISSDA was hired, highlighting UCD Library's continuing commitment to ISSDA.



SERVICES FOR

**DATA
PROVIDERS**

01

Your data are

Professionally curated

Sharing your data via ISSDA ensures that your data will be professionally curated and managed.

All data disseminated by ISSDA have undergone rigorous checks to ensure that they have been fully anonymised, thus protecting the individual data confidentiality.

Your data are

Enhanced with metadata

ISSDA enhances data through the creation of metadata based the Data Documentation Initiative (DDI) international standard for describing statistical and social science data.

A metadata record is created based on the information provided by the depositing organisation in the deposit form.

ISSDA uses Hasset, the leading thesaurus for the social sciences, for subject headings.

03

Your data are

Preserved

ISSDA is committed to maintaining these data resources for the long term, ensuring that, as data formats evolve and advance, the archive's holdings are always available in easily accessible forms.

ISSDA is working towards to the Data Seal of Approval (DSA), a certification for sustainable and trusted data repositories.

04

Your data are

Disseminated via a national platform

ISSDA is a national platform & holds a range of key Irish and international comparative datasets.

Key studies include data from the CSO, Growing Up in Ireland, Healthy Ireland & TILDA.

Research data have significant value beyond the usage for the original research. ISSDA ensures that value is realised.

Your data are

Disseminated under licence

ISSDA holds a range of key Irish and international comparative datasets, and makes them available for secondary analysis by students, academics, and researchers in the public and commercial sectors.

Data providers can choose under which licenses their data are distributed; research & teaching.

Your data are

Encrypted

ISSDA uses tools including Kleopatra, PKWARE SecureZip & Keka (for Mac users) to ensure that data are encrypted at ingest and delivery.

We use HEAnet FileSender to deliver data to researchers. FileSender is developed to the requirements of the higher education and research community and supported by HEAnet, Ireland's National Education and Research Network.

ISSDA provides

Usage reports

ISSDA can generate usage reports, which typically include the number of requests, number of users, type of users, subject area and description of projects.

We are currently developing a new database which will allow easier reporting to depositors.

FUTURE

SERVICES

01

Minting of

DOIs

UCD Library mints Digital Object Identifiers (DOIs) for objects in the UCD Digital Library using a service called EZID, provided by the University of California.

ISSDA will roll out this service for both data and documentation in the future.

Implementing

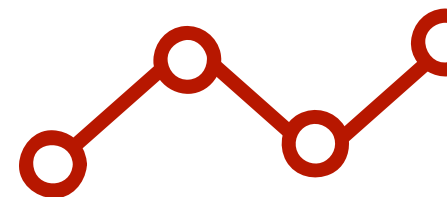
NESSTAR

Nesstar is owned by Norwegian Social Science Data Services (NSD). It is a software system for data publishing and online analysis. The software consists of tools which enables data providers to disseminate their data on the Web.

Nesstar handles survey data and multidimensional tables as well as text resources. Users can search, browse and analyse the data online.

RESPONSIBILITIES OF

DEPOSITORS



WHAT DO WE NEED FROM DEPOSITORS?

DATA

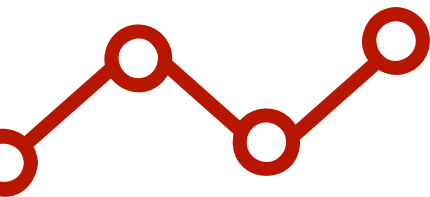
- Anonymised
- Clean
- Recommended formats:
SPSS, SAS, STATA

DOCUMENTATION

- Depositor form
- Data dictionary
- Questionnaire
- Reports
- etc.

SUPPORT

- Answer questions about
the data when they arise



SERVICES FOR

RESEARCHERS

01

Researchers can

Request data

Researchers submit an application form to ISSDA. This describes which data are required, who will be using the data and what the intended use of the data is.

The End User License is signed by the primary user, who is bound by the terms of the licence.

Researchers can

Submit queries

ISSDA supports the re-use of data by handling researcher queries via email. General queries are handled by our Library Assistant.

Data specific queries, including those relating to variables or methodology, are forwarded to the Data Provider, if necessary, by the Data Manager.

Researchers can be included in the

Register of Use

ISSDA manages a register of use for two studies – Growing up in Ireland (GUI) and The Irish Longitudinal study on Ageing (TILDA). Each register is organised around research themes according to the research projects that have/are being carried out.

04

Researchers can attend

Workshops

To help researchers re-use data successfully ISSDA is developing a series of workshops.

So far we have organised a workshop on 'Anonymising Research Data' with the Children's Research Network for Ireland and Northern Ireland (CRNINI).

www.ucd.ie/issda

CONTACT US

issda@ucd.ie

@ISSDA